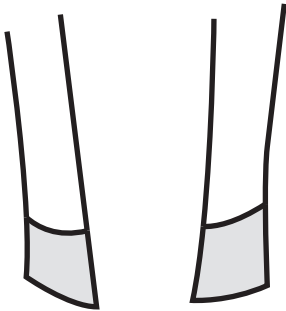


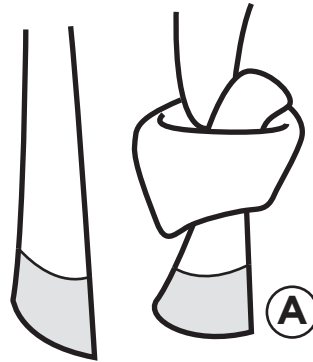
HOW TO TIE A SCARF: THE FAKE KNOT

This knot is ideal for medium length scarves, and great with patterned scarves or scarves with a thicker weave.



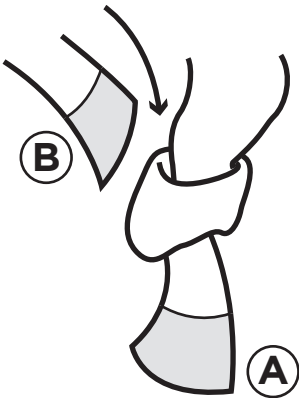
1

Place the scarf around your neck and let it hang equally on each side.



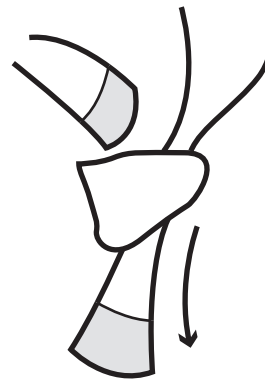
2

Make a knot on one side "A".



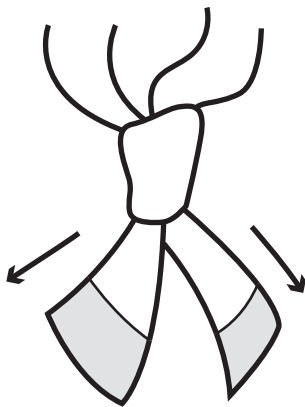
3

Bring the other side "B" towards "A".



4

Let "B" pass through "A" to form a knot.



5

Tighten the knot to get a beautiful fake knot.